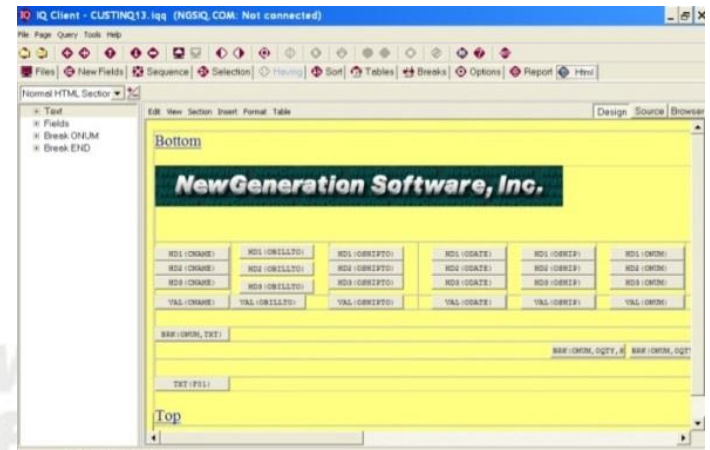




HTML Output from WebRunner

- Works much like output to display
- Query is run from the Web browser
- Output displays in the Web browser
- Formatting is specified in IQ Client
 - banner
 - background
 - cascading style sheet
 - drag/drop, point-click interface to customize layout at every level
 - may include charts at report breaks
- Output can include hyperlinks from report breaks (summary values and charts) to initiate the ad hoc execution of linked queries



Cascading Style Sheets

- A text file containing instructions a Web browser uses to display HTML
- Contains classes which correspond to sections of your report so you can specify things like:
 - fonts
 - type sizes
 - colors
 - backgrounds
 - borders
- Acts as an overlay to the HTML file to create the desired presentation
- Separates formatting from the HTML so you can create a reusable standard and save report development time
- Easy to create using many tools



IQ Client – WebRunner HTML Style Sheet Classes

Report Section	Style Sheet Class
Entire report when it is the only class defined	.IQREPORT
Report heading lines	.IQHPAGE see tokens TXT(H01), TXT(H02), TXT(H03)
Column headings	.IQHCOLUMN see tokens HD1, HD2, HD3
Detail field values	.IQDTLROW see tokens with VAL labels
Line immediately below the last detail row (often blank)	.IQFCOLUMN
All report breaks if it is the only report break class defined	.IQBREAK
Individual report breaks	.IQBREAK01, .IQBREAK02, etc.
End of report break	.IQBREAKEND
Entire report table when it is the only report table class defined	.IQTABLE
Heading area of a report table	.IQTBLHDR
Detail section of a report table	.IQTBLROW
Last line of the report table	.IQTBLTTL (the line showing the number of class entries)

I N F O R M A T I O N W H E R E I T C O U N T S