



# NGS-IQ

Query, Reporting, and Analytics for IBM i  
(iSeries, System i, AS/400) Users

## INFORMATION WHERE IT COUNTS

NGS-IQ™ from New Generation Software, Inc. (NGS) provides analysts, managers, and IBM i experts with comprehensive query, reporting, and analytics capabilities.

Whether you need to write an ad-hoc query, develop a production report, create a spreadsheet, design a Web report, format a multidimensional model, or distribute critical information in a commonly used format, NGS-IQ can help you do the job. Here are a few of the capabilities that set NGS-IQ apart:

### Output Types

- Microsoft® Excel, Word, and Access
- Graphical, interactive Web reports
- Multidimensional “OLAP” models
- PDF, CSV, TXT, XML, Db2, labels, print
- 5250 and Windows display

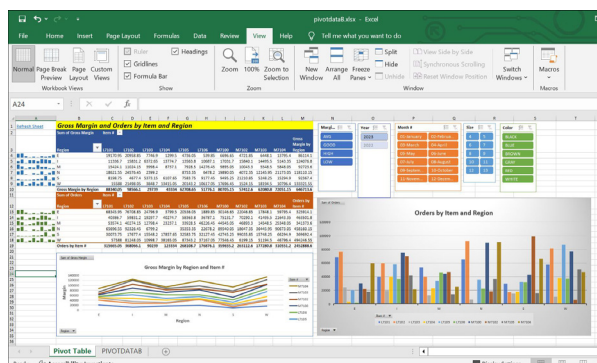
### User Interfaces

Develop queries where you feel the most productive: Windows or 5250.

Run queries from Web pages, portals, mobile devices, 5250 panels, CL programs, job schedulers, Windows shortcuts, and hyperlinks.

### Query and Report Writing Highlights

- Conditional (if, then, else) calculations
- Summary calculations (Sum A – Sum B, Sum B/Sum C, etc.)



- Run-time prompting for record selections and calculation formulas
- Table join wizard to simplify table joins
- One-to-many, union, and exception joins
- Analytical summaries – rank, running total, percent of total, and more
- Drill down links from summary values
- Interfaces for custom exit programs
- Extensive date arithmetic and formatting
- Statistical calculations – count, standard deviation, minimum, maximum, average
- Flexible formatting

### Meta Data

- Query statistics and history – creation date, created by, last run by, last changed by, number of times run, and other useful facts
- Query object documentation, including tables, fields, descriptions, and keywords



## NGS-IQ Modules

### *IQ Server™*

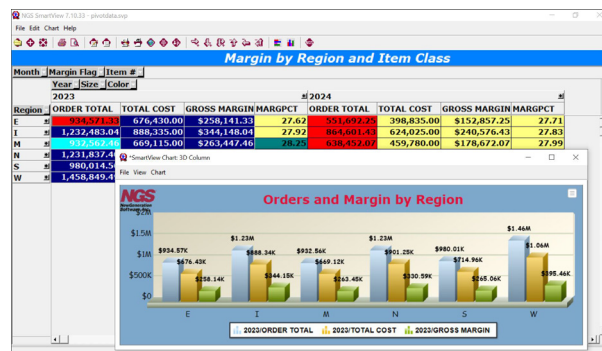
*IQ Server* is the engine of *NGS-IQ*. It provides unsurpassed function for extracting, sorting, selecting, calculating, manipulating, summarizing, formatting, and distributing data.

### *IQ Client™*

*IQ Client* provides Windows users with a drag-drop, point-and-click query development interface, plus graphical Web report design features, including charts and drill down.

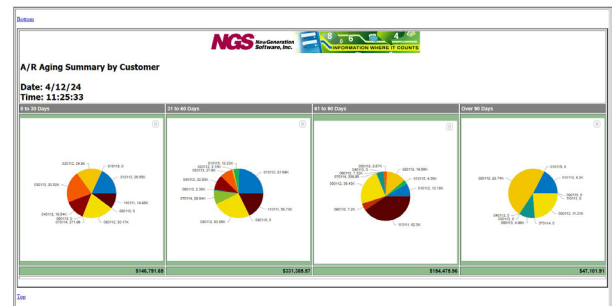
### *Qport® Access*

*Qport Access* enables Windows users to send query output to Microsoft Excel, Word, and Access as well as the *Qport SmartView* OLAP module, the Windows display, and printers. Users can direct Excel output to workbooks, sheets, ranges, and tables which can refresh existing summaries, charts, and pivot tables.



### *Qport® SmartView*

*Qport SmartView* is *NGS-IQ's* online analytical processing (OLAP) module. It provides drag-and-drop formatting, drill down, filtering, calculations, formatting, traffic lighting, 2-D and 3-D graphics, and one-click export to Excel and HTML.



### *IQ Connexion™*

*IQ Connexion* extends your reach to Microsoft SQLServer®, MySQL®, Oracle®, IBM Db2®, and other data sources so that you can integrate data and create more informative reports.

### *IQ SeQure™*

*IQ SeQure* is *NGS-IQ's* optional security and query inventory module. It helps you control users' database and query rights. You can also define the rights to specific *NGS-IQ* functions such as e-mail and FTP.

### *IBM Query/400 Migration Support*

*NGS's* "IBM Query/400 API" enables you to run Query/400 queries from *NGS-IQ* without rewriting or converting the Query/400 objects.

## About NGS

*NGS* is an IBM Business Partner based in Sacramento, California. We support customers of all sizes in every industry.

We encourage you to visit [www.ngsi.com](http://www.ngsi.com) to learn more. You may also take advantage of our On Demand Video Library where you will find everything from short, introductory videos to hour-long lessons for developers.