

Elevate End User Productivity

Qport[®] Access lets Windows users run queries built with NGS-IQ™ — NGS' integrated query, reporting, and analytics solution — and securely and efficiently deliver results directly to their favorite Windows applications. This easy, simple approach greatly enhances staff productivity.

How It Works

Qport Access transfers your query result to your target application. You can send results directly into Microsoft Excel, Access, and Word as well as to Qport SmartView (NGS-IQ's OLAP module), your Windows display, printer, and more. No middleware is required, and your queries run as IBM i batch jobs.

Qport Access lets you extend report access to your authorized customers, business partners, and vendors as well as to your remote sites and mobile users. Authorized Windows users can run NGS-IQ queries from anywhere.

Microsoft Excel Integration

When sending reports to Excel, Qport Access users can specify the workbook, sheet, and named range where they want the data delivered. You can create, replace, and append to Excel as often as desired. Formatting is preserved along with expressions and other functions contained in the sheet to maximize productivity.

This enhanced functionality extends to Excel pivot tables, allowing you to create and design your tables with charts, filters, and slicers that can be saved and refreshed as needed when the query is rerun. Every time you change a variable, such as a new record selection for a date range, your pivot table will be updated automatically.

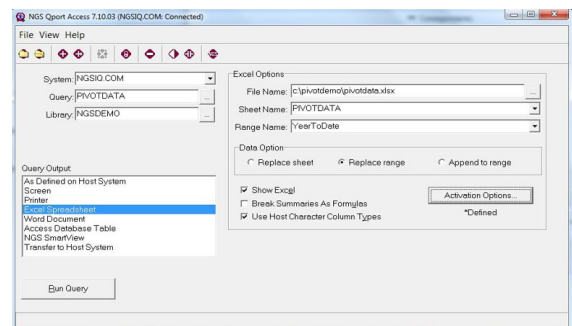
Qport Access can automatically convert your

summaries and calculated fields into formulas and even load your data into one sheet and display another. You might use this capability to automatically update and display a chart based on your query output. If you establish live links between your Excel data and other files such as PowerPoint presentations, these other files will update each time you use Qport Access to refresh the Excel sheet.

If you have fields like product numbers, account numbers, or others that begin with one or more zeros, you'll appreciate how Qport Access lets you tell Excel to treat these fields as character fields and not truncate leading zeros when loading the data into your worksheet.

Advanced Functionality

Qport Access does not restrict your users to the simple reporting found in most competing



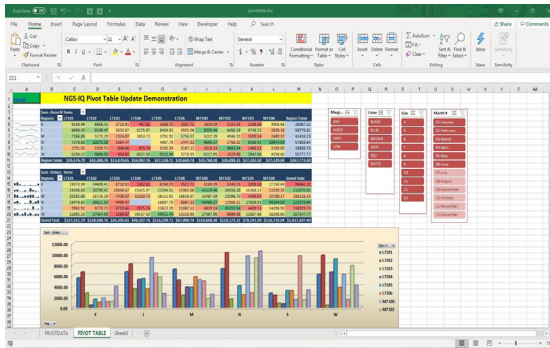
products since it takes advantage of the advanced functionality of IQ Server™ and the IBM i environment.

You can run sophisticated reports with complex record selection criteria, conditional calculations and summary level new fields, extensive formatting, file joins, links to remote databases, and other powerful functions without confusing users.

Qport Access prompts users at run time for new field calculation formulas and one-time record selection criteria. This flexibility allows users to change discount formulas, date

ranges, customer names, item numbers, etc., without revising the query.

Qport Access also allows you to link *NGS-IQ* queries together to run in a series which can still include run-time prompts at each link.



Qport Access lets the user specify where they want their query results sent each time they run the query, so different users who run the same query are not limited to viewing the results in the same format. For example, a query might be output to display or to a printer one time and to Excel or *SmartView* the next.

Users may also select a printer and print selected pages or all of the pages of their report. They can specify type size, print orientation, number of copies, whether or not to collate, and adjust other printer settings as desired.

Data Transfer to Host

You probably have accountants creating budgets in Excel, at least one department running an important Windows application, a server collecting website traffic data, bid specifications generated outside the DB2 environment by your sales people, or data obtained from credit reporting, government, or third-party market intelligence vendors. This data is too valuable not to use, so *Qport Access* allows authorized users to transfer these files into DB2 where they can be joined with the rest of your enterprise data to produce more meaningful reports and analysis.

You identify the data source, tell *Qport Access* the name of the DB2 file and library where you want the data loaded, and which fields

to transfer. You can assign attributes such as length, type, and column heading for each selected field, so data loads accurately — whether you are creating, replacing, or appending to a file.

The “Transfer to Host” option dramatically simplifies copying data from your PC to DB2 on i.

NGS offers the module known as *IQ Connexion™* for higher volume, real-time, remote access to Microsoft SQL Server, Oracle, MySQL, PostgreSQL, and DB2.

Security

Qport Access operates in strict compliance with your IBM i security.

You can control who can use *Qport Access* to download or upload data. Unless authorized on both IBM i and the specific desktop, the “Transfer to Host” option does not appear on the user’s *Qport Access* menu.

The separately licensed *IQ SeQure™* module can provide further control over the use of this option by letting you limit *Qport Access* uploads to specified libraries and identify which users can work with those libraries.

Company-Wide Solution

NGS-IQ customers depend on *Qport Access* enterprise-wide to meet the diverse reporting needs of their business analysts, users, and managers. *Qport Access* delivers daily production reports, monthly sales analysis, quarterly P&L statements, and ad-hoc queries with ease, so users can meet departmental and company objectives.

Ultimate Benefit

Qport Access can cut the time IT staff spends running queries and distributing reports. Users no longer need to wait for information, and your company runs more efficiently.