

Web-Based Query and Reporting

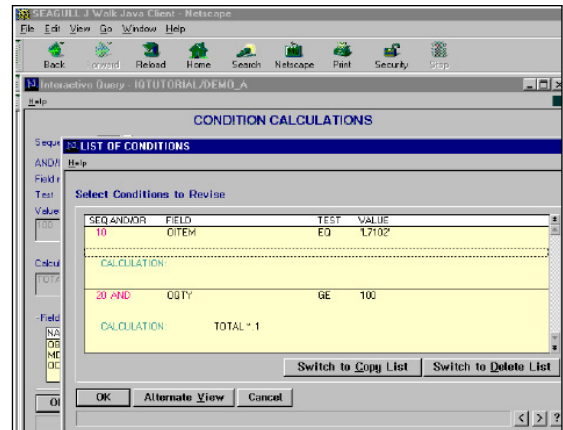
Despite the multitude of query tools on the market claiming to simplify DB2 access and reporting over the Web, you are still searching for a solution – a solution that does the following:

- Provides superior performance and maximum security
- Operates on the IBM i (AS/400) to eliminate desktop software installation
- Allows in-depth analysis of your data in one query
- Minimizes the need for multiple report writers for each specific application
- Offers ease of use in implementation support and training
- Provides point-and-click query definition
- Satisfies the requirements of all your users

The solution...Qport[®] Builder™!

More Than Just Point and Click

With *Qport Builder* and its companion module *Qport[®] Access™*, you can create and execute reports on demand and then download the results to your favorite desktop application. Available as a robust graphical user interface and as a Java-based applet through your favorite Web browsing software, *Qport Builder* features a powerful, mouse-driven, point-and-click environment; easy navigation; consistent panel design; and pop-up boxes. *Qport Builder* offers users much more than just another pretty graphical user interface. *Qport*



Builder builds on the superior functionality in *IQ Server™* (IQ) — NGS' powerful, advanced-function query and reporting software — to create complex, customized reports.

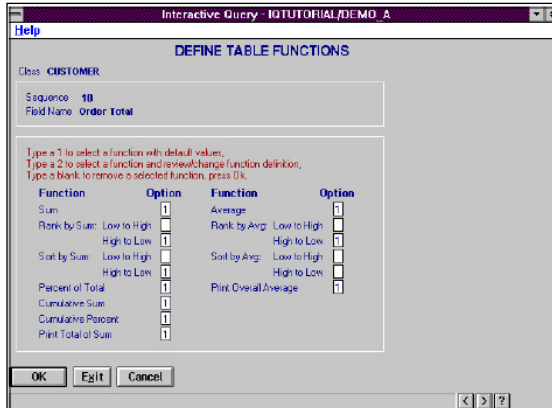
Streamlined Workflow

User training and access is simplified with *Qport Builder*. Its ease of use allows non-technical users to quickly generate their own ad-hoc queries and even multi-up labels without IT assistance. Power users can rapidly generate customized reports that would take other query and reporting tools five or six separate queries of their data to produce.

Internet Capabilities

Your remote sites and traveling business users can meet all of their reporting requirements easily by using *Qport Builder* via the Internet. *Qport Builder* users who have remote access and an IBM i user ID and password can build and run queries on demand. You retain complete control of the job's priority and execution mode (interactive or batch) just as if

a local user requested the query.



Advanced Features

Qport Builder's advanced functions include the following:

- Conditional and summary new fields
- File join wizards and macros
- Meaningful database aliases
- Run-time record selection and exclusion
- Web links to support real-time summary-to-detail drill down when running queries with *NGS-IQ's* WebRunner interface
- Record sampling
- Union and file member support
- Extensive formatting
- Multidimensional matrix reporting
- Rankings, averages, sums, and totals
- Summary and detail output
- HTML, XML, and PDF output
- Email and FTP for report distribution with the ability to substitute in database field values at run-time for email TO, CC, BCC, Subject, and Message content
- Ability to generate alert messages when specific conditions exist in your data
- Leading edge DB2 security

Cross-Platform Database Access

NGS-IQ™ and *Qport Builder* run on the IBM i, but you can give yourself the ability to query MySQL, SQL Server, Oracle, PostgreSQL, and DB2 databases on other platforms by adding *NGS' IQ Connexion™* module to your license. *NGS* also offers a Query/400 API so you can enhance and run existing IBM Query/400 queries from *Qport Builder* without going through a conversion process.

Superior Performance

Qport Builder gives you a reliable Web-browser interface and the power, high performance, low maintenance, and reliability of the IBM i.

A Total Solution

Qport Builder is a modular component of the *NGS-IQ™* product line, which includes the following:

- *IQ Server* (Interactive Query)
- *Qport Access*
- *SmartView™*
- *IQ SeQure™*
- *NGS Business Performance Dashboard*
- *IQ Client™*
- *IQ Connexion*

In addition, *NGS* offers packaged analytical models for sales, customer, inventory, financial, and healthcare. These models include Web portals, DB2 data marts, multidimensional models, reports, dashboards, and other outputs that can be easily customized with *NGS-IQ*.