

## Portable Insight, Analysis, Presentation

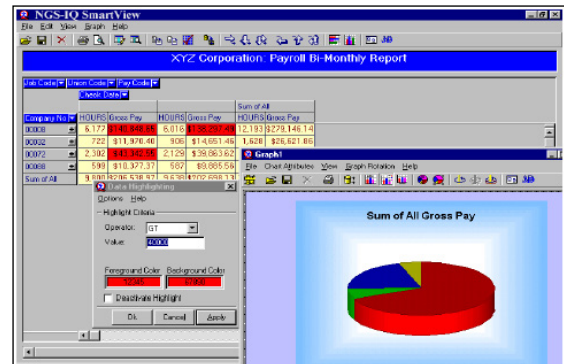
To make smart decisions, you need reports that reflect the complex, multidimensional nature of your business. How much time could you save if you could instantly reformat your most critical reports? Could you make quicker, more accurate decisions if you were able to highlight critical values and drill down or up through multiple levels of detail and summary data – even down to original purchase orders or invoices, on demand? Wouldn't it be helpful to be able to see and compare gross margins, averages, totals, and other summary information across business dimensions? Could your remote users or traveling managers benefit by accessing your corporate data via the Internet and graphing the results in virtually any presentation format?

You can do this and more with *SmartView*™ from New Generation Software, Inc. (NGS).

### What is SmartView?

*SmartView* is the powerful, Windows online analytical processing (OLAP) module of *NGS-IQ*™. It enables users to transform *NGS-IQ* query output into multidimensional models without requiring a database administrator or skilled consultant.

*SmartView* can provide answers in seconds – whether you want to see sales by division and territory; product by quarter, month, and week; shipments by distribution center; aged payables in 30, 60, and 90 day buckets; or any other type of analytical report.



*SmartView* lets you format, pivot, filter, chart, drill into, and analyze your data in virtually unlimited ways. If needed, you can enhance your *SmartView* model to include values like margins, averages, totals, percentages of totals, and other information.

*SmartView* allows you to save as many different views of your data on your PC or network as you need. *SmartView* also gives you the flexibility to refresh your data from your host system as required.

*SmartView* is not a spreadsheet. It presents a read-only view of your business data, so decision makers can act on what they see without wondering about data integrity.

### SmartView Features

- Drag-and-drop formatting
- Drill-down, drill-up, across, and to the lowest level of detail in presentations and charts
- User-defined data highlighting logic
- Filtering what is included in a view so you can effectively isolate and/or compare data elements

- Calculated fields based on other data fields in your model
- Split screens for data comparison
- 2-D and 3-D charts (pies, bars, lines, etc.)
- Copying/pasting and exporting to Excel, HTML, and other applications
- Saving *SmartView* models and charts as full-color Adobe® PDF files using the Adobe Acrobat Distiller or a PDF printer driver

### **Complete Integration with NGS-IQ**

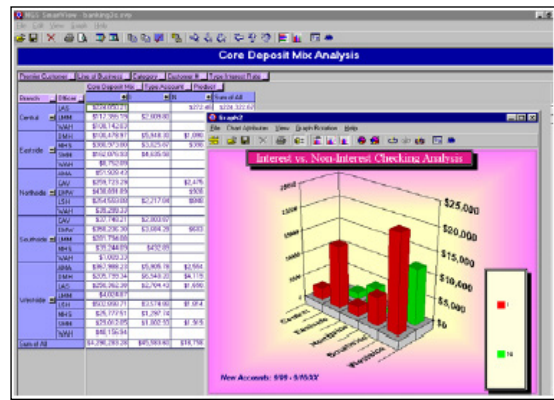
*SmartView* is a completely integrated module of the *NGS-IQ* business intelligence system. This integration means you benefit from the full database extraction and reporting power of *NGS-IQ* when transferring data to *SmartView*. It also means you can provide your managers with easy access to your data without compromising security or performance.

### **What is NGS-IQ?**

*NGS-IQ* is a comprehensive query, reporting, and business intelligence solution built for IBM i. It includes both IBM i and Windows-based data extraction and reporting tools that provide you with advanced functionality and presentation features.

*NGS-IQ* users can create queries with the *IQ Server*™ (IQ), *IQ Client*™, and *Qport® Builder* modules and run their queries on the IBM i from Windows, Web pages, portals, Web applications, Web-enabled smartphones, and 5250 “green screen” interfaces.

*NGS-IQ*'s *Qport® Access* module on the Windows desktop is the bridge that delivers data to *SmartView*. *Qport Access* provides run-time access to *NGS-IQ* queries and supports the ad-hoc entry of selection criteria, calculation



formulas, and output target, including Excel, Word, Microsoft Access, the Windows display, and IBM i or ASCII printers.

All data extractions, queries, and reports defined and run through *NGS-IQ* operate in accordance with your existing IBM i security. You may also develop database and report authority specifically for your *NGS-IQ* users with the *IQ SeQure*™ module.

### **Smart Client Architecture**

*SmartView* performs impressively on nearly any Windows workstation. Users need no additional IBM i connectivity software to operate *SmartView*. The software lets you connect and leverage the resources of the IBM i for data retrieval and then work offline while performing your analysis to make optimal use of your computing resources.